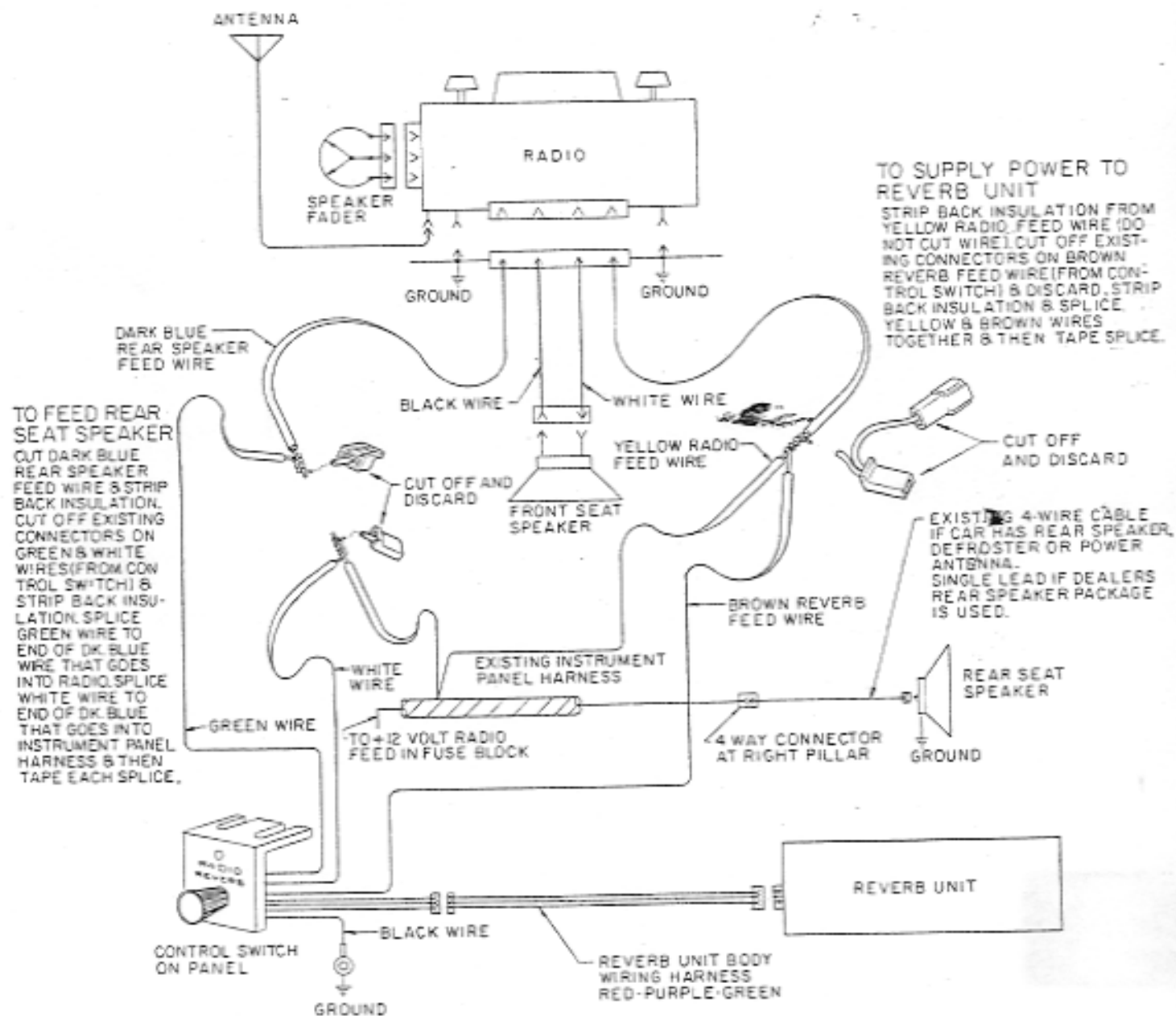


BUICK

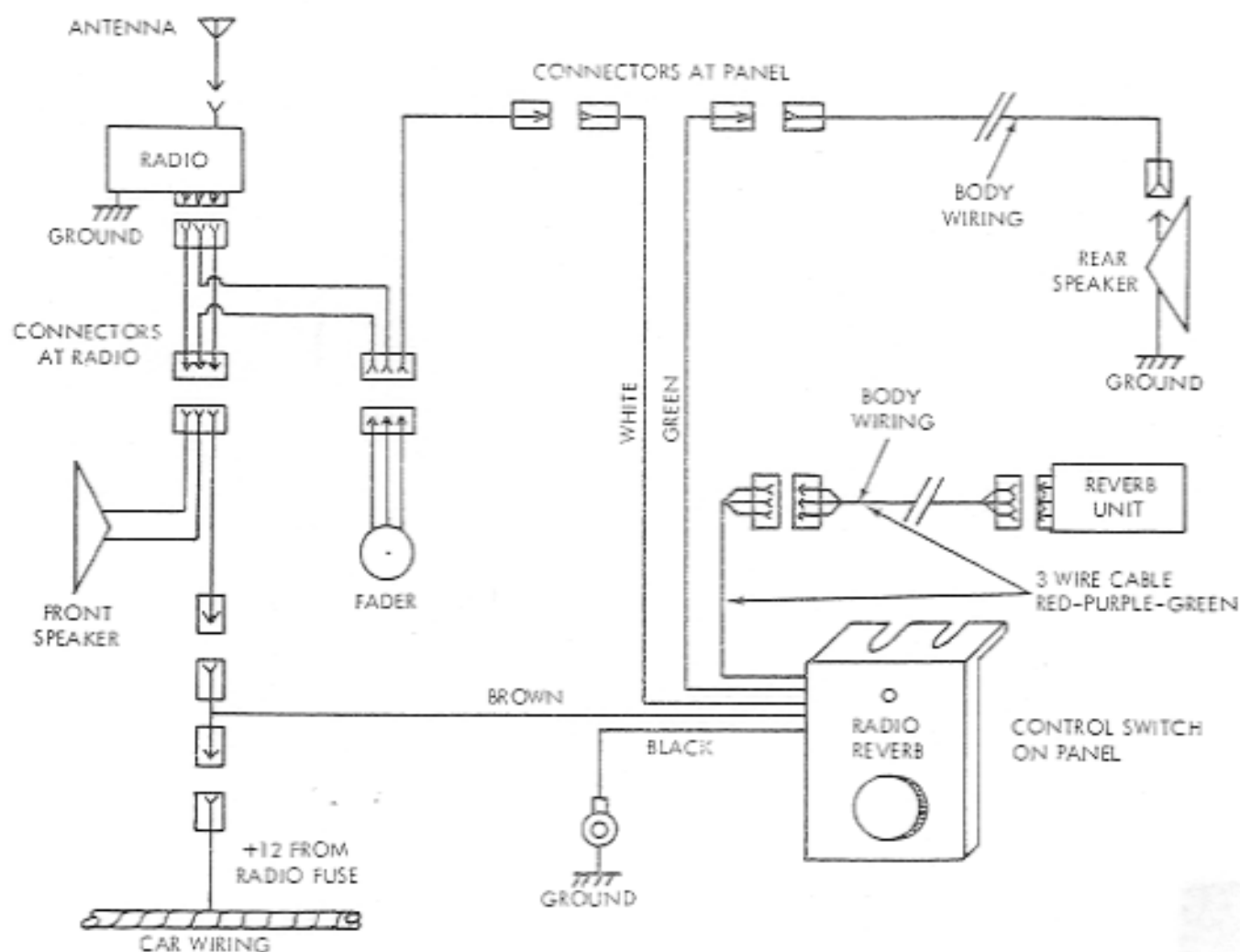
Installation Instructions

REVERBERATION UNIT WIRING DIAGRAM FOR 1965 LE SABRES, WILDCATS & ELECTRAS

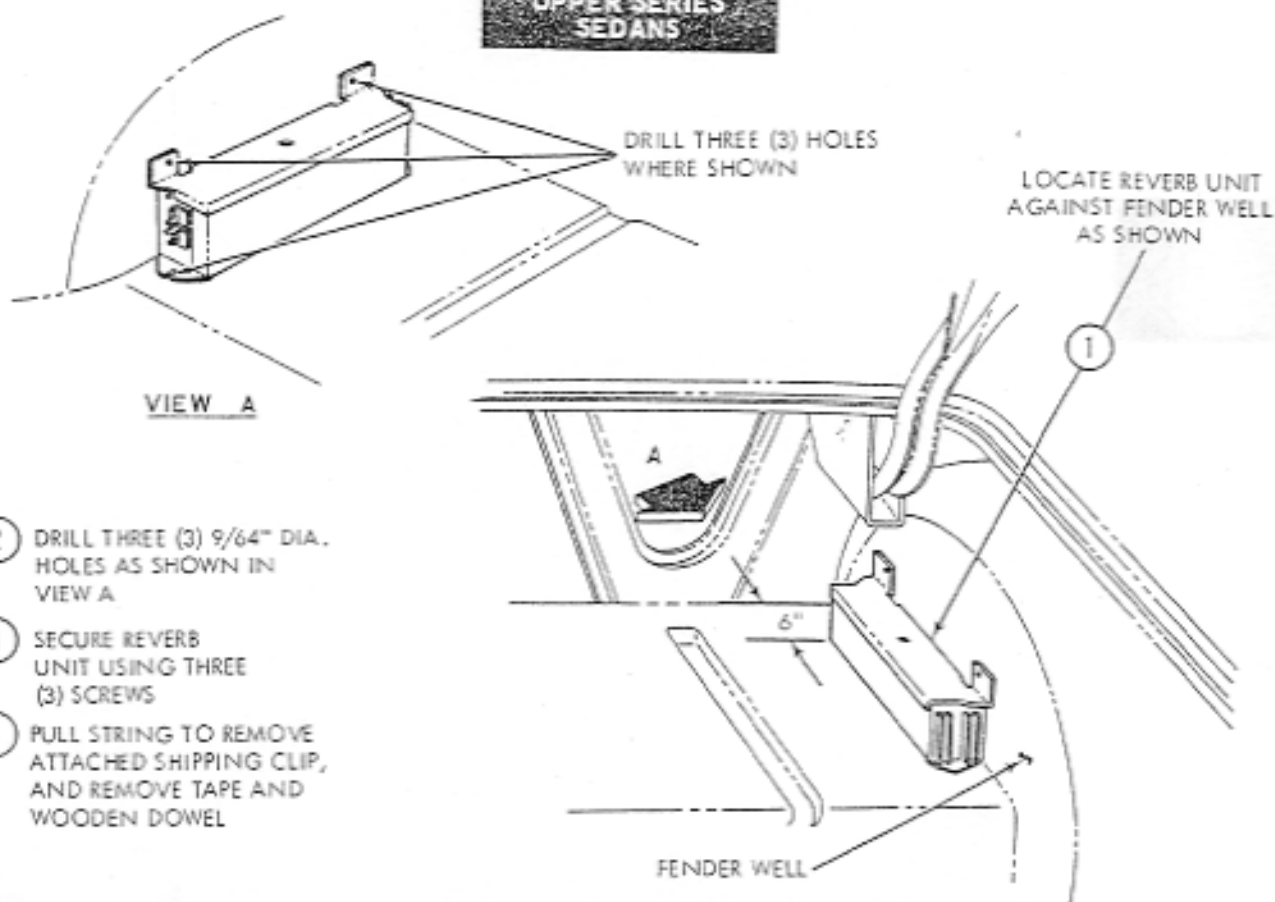


**SCHEMATIC WIRING
DIAGRAM**

**1964 - 1965
SPECIAL and RIVIERA
MODELS**

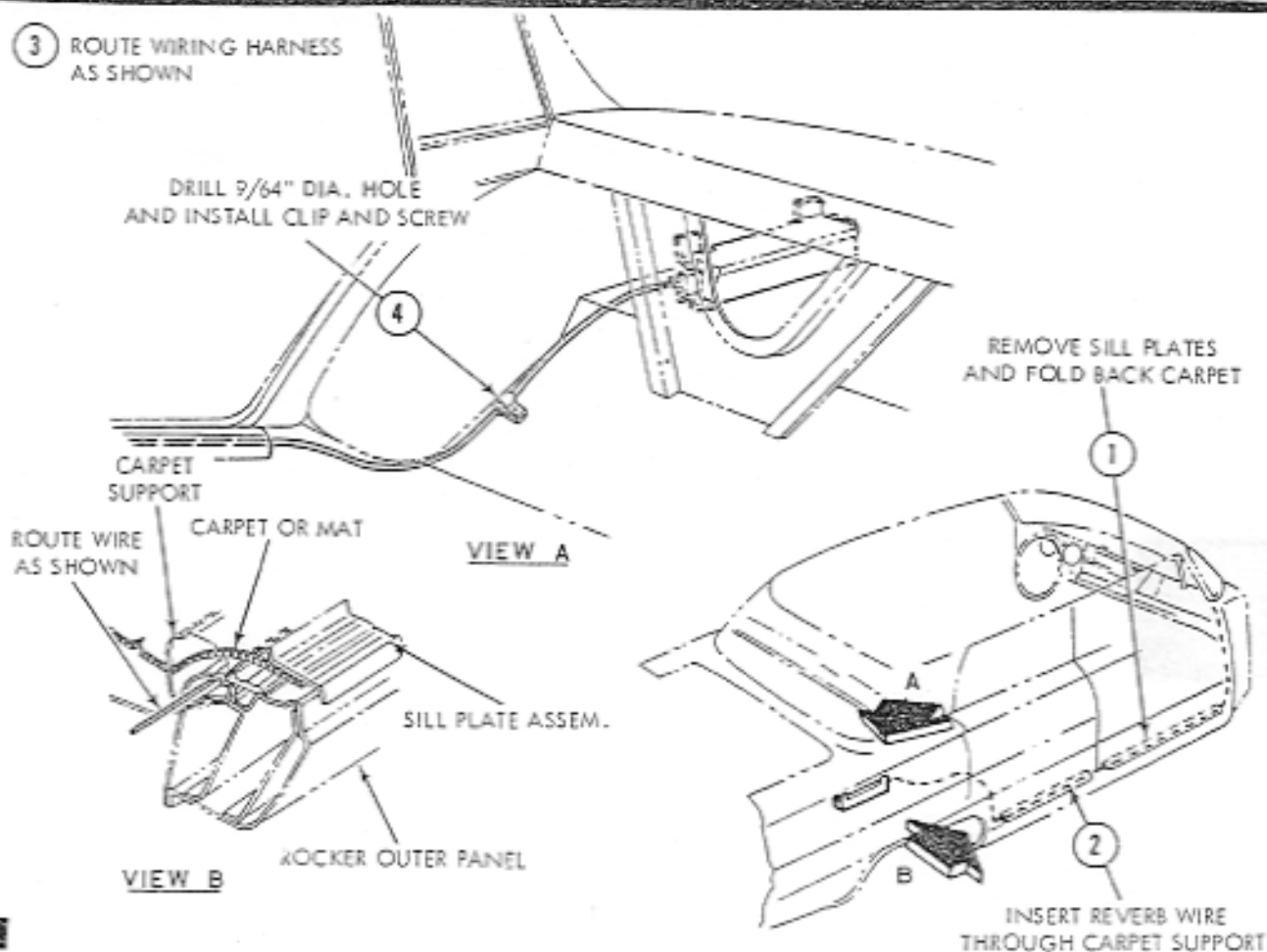


**UPPER SERIES
SEDANS**

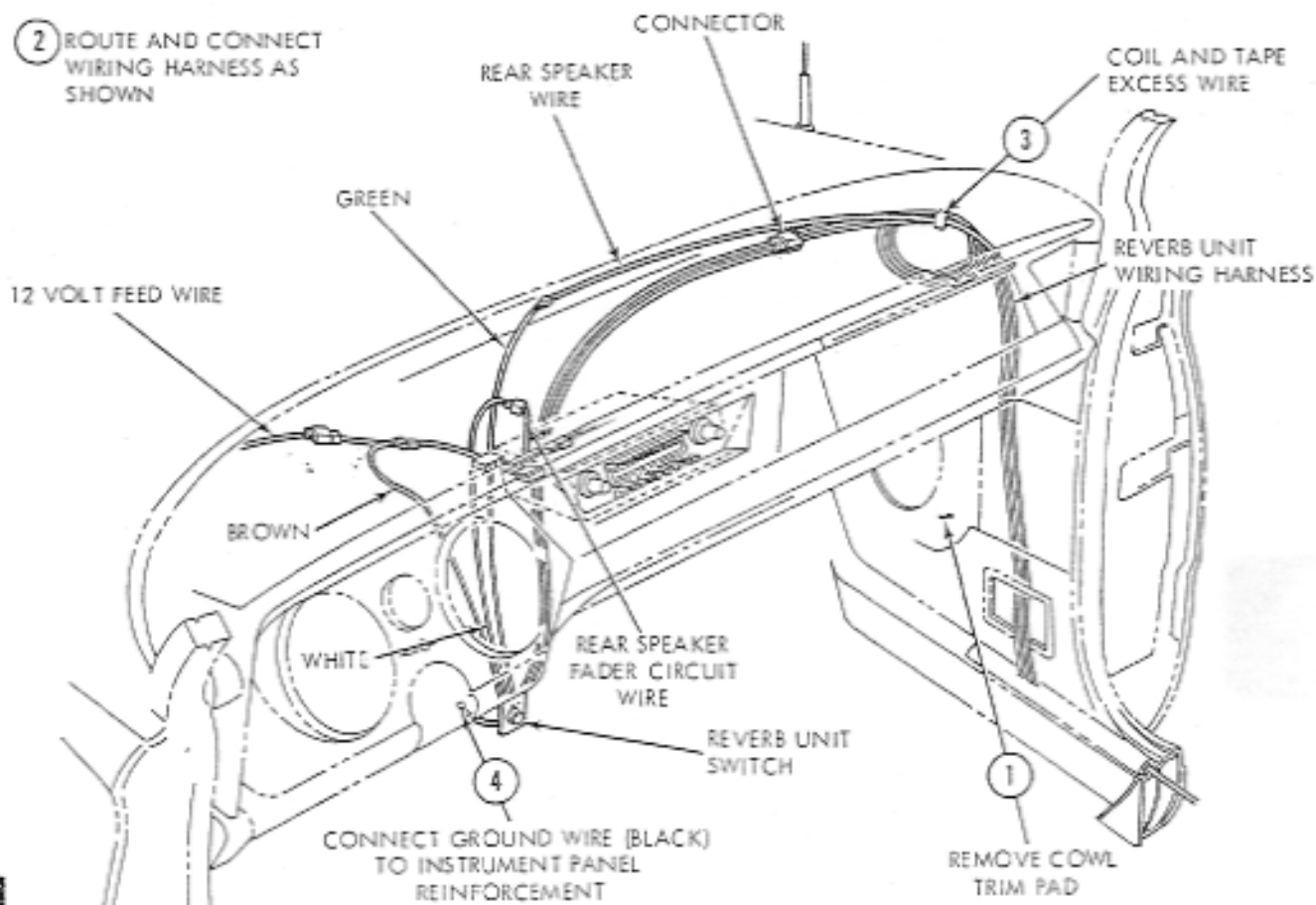
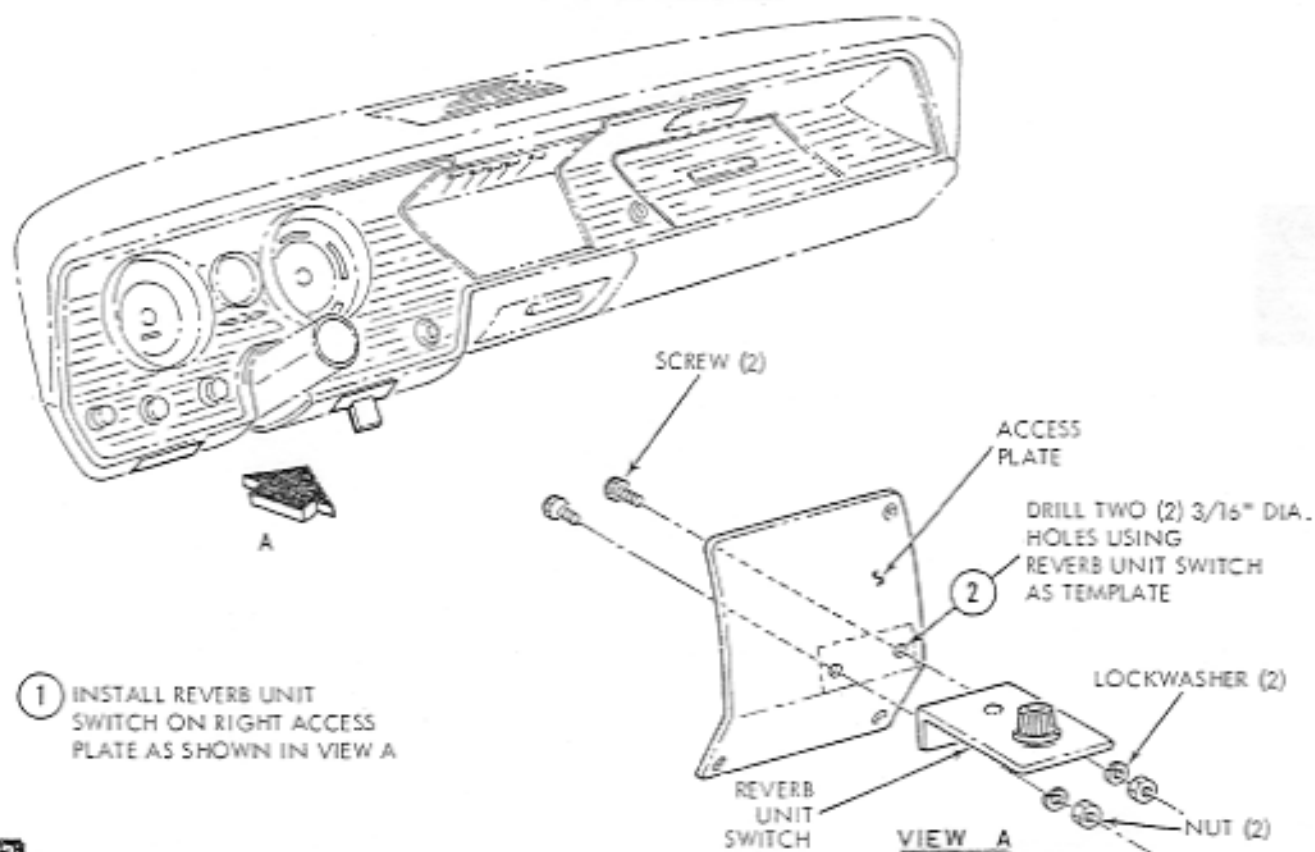


- 2 DRILL THREE (3) 9/64" DIA. HOLES AS SHOWN IN VIEW A
- 3 SECURE REVERB UNIT USING THREE (3) SCREWS
- 4 PULL STRING TO REMOVE ATTACHED SHIPPING CLIP, AND REMOVE TAPE AND WOODEN DOWEL

- 3 ROUTE WIRING HARNESS AS SHOWN

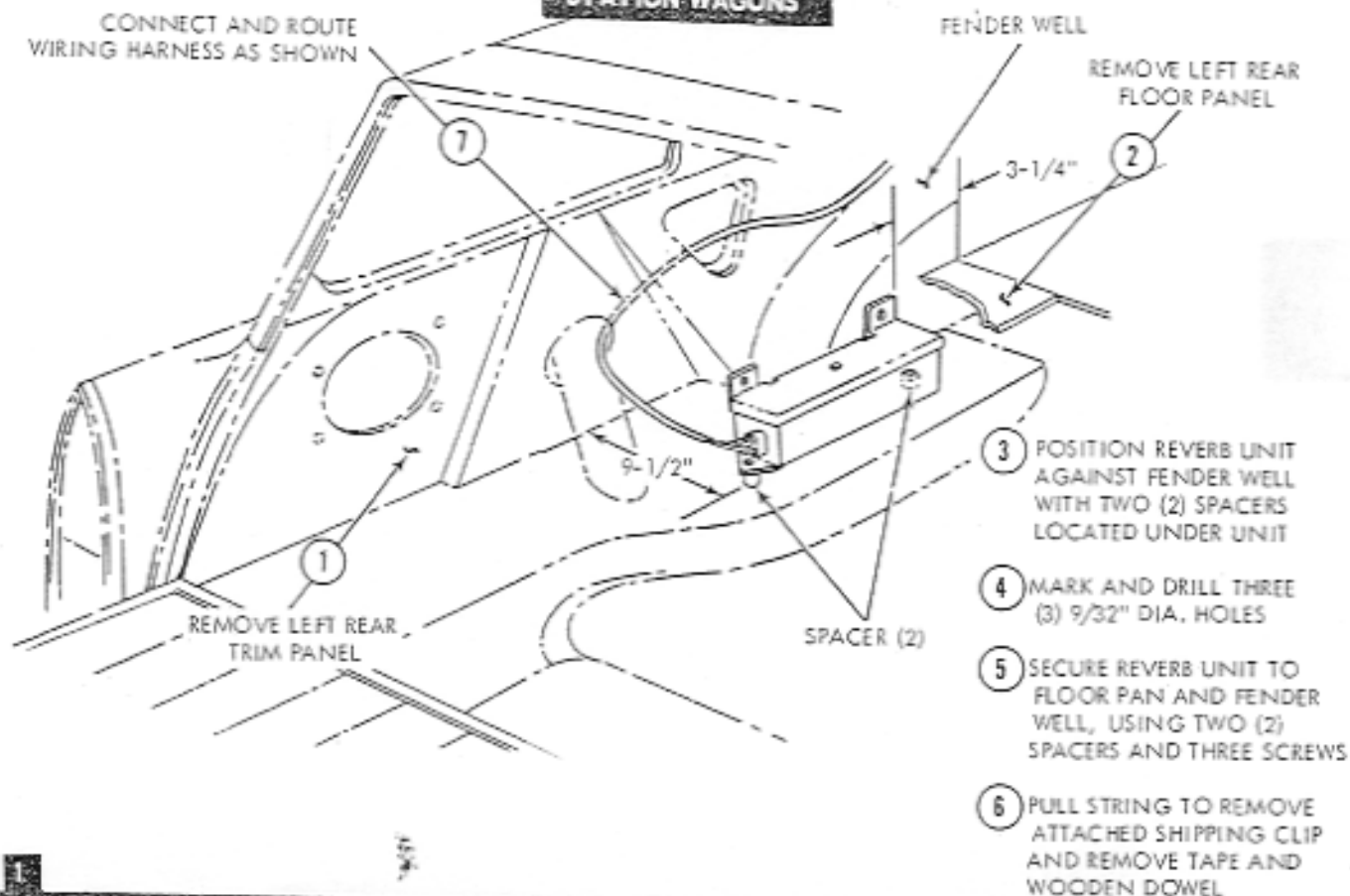


UPPER SERIES
SEDANS

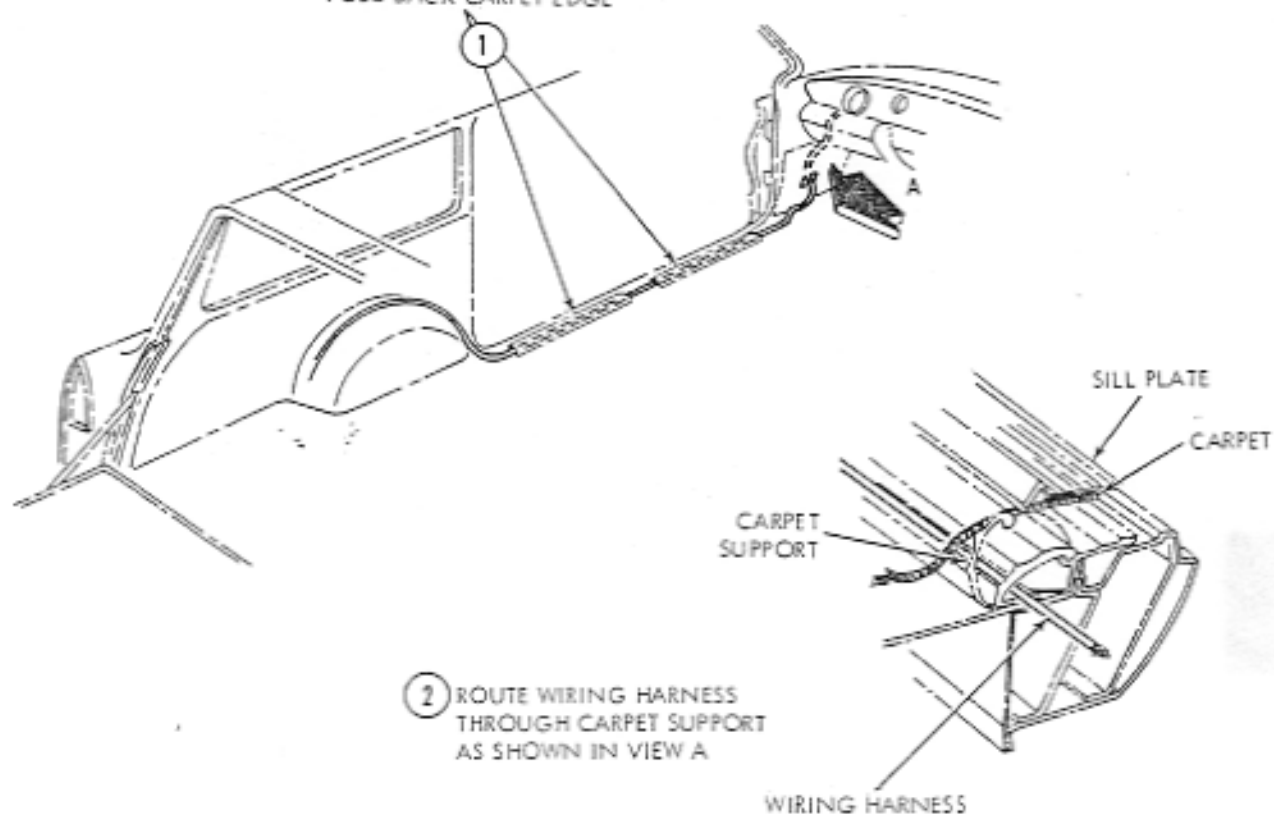


**UPPER SERIES
STATION WAGONS**

CONNECT AND ROUTE
WIRING HARNESS AS SHOWN

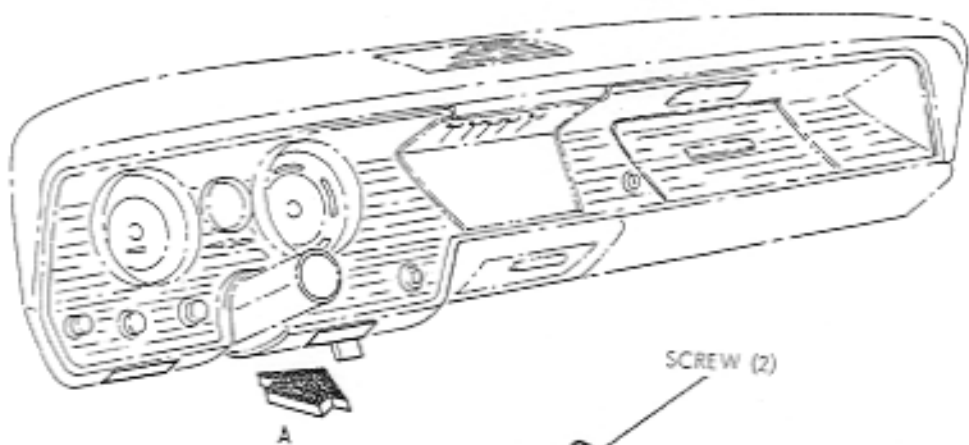


REMOVE SILL PLATES
FOLD BACK CARPET EDGE

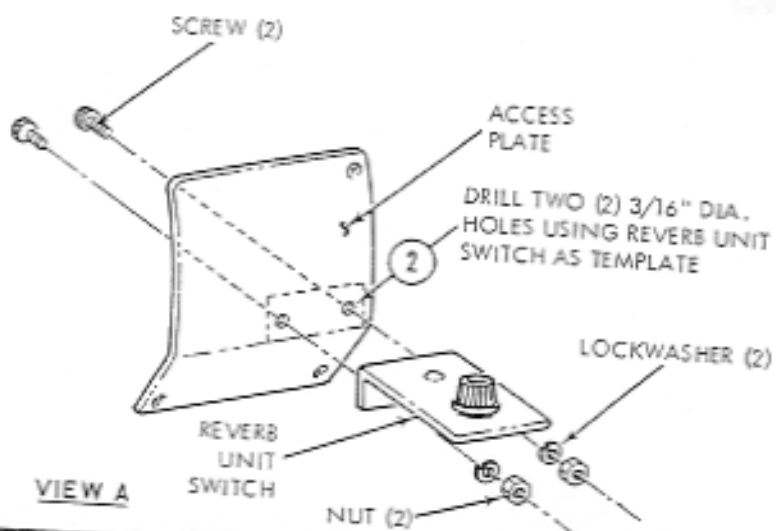


VIEW A

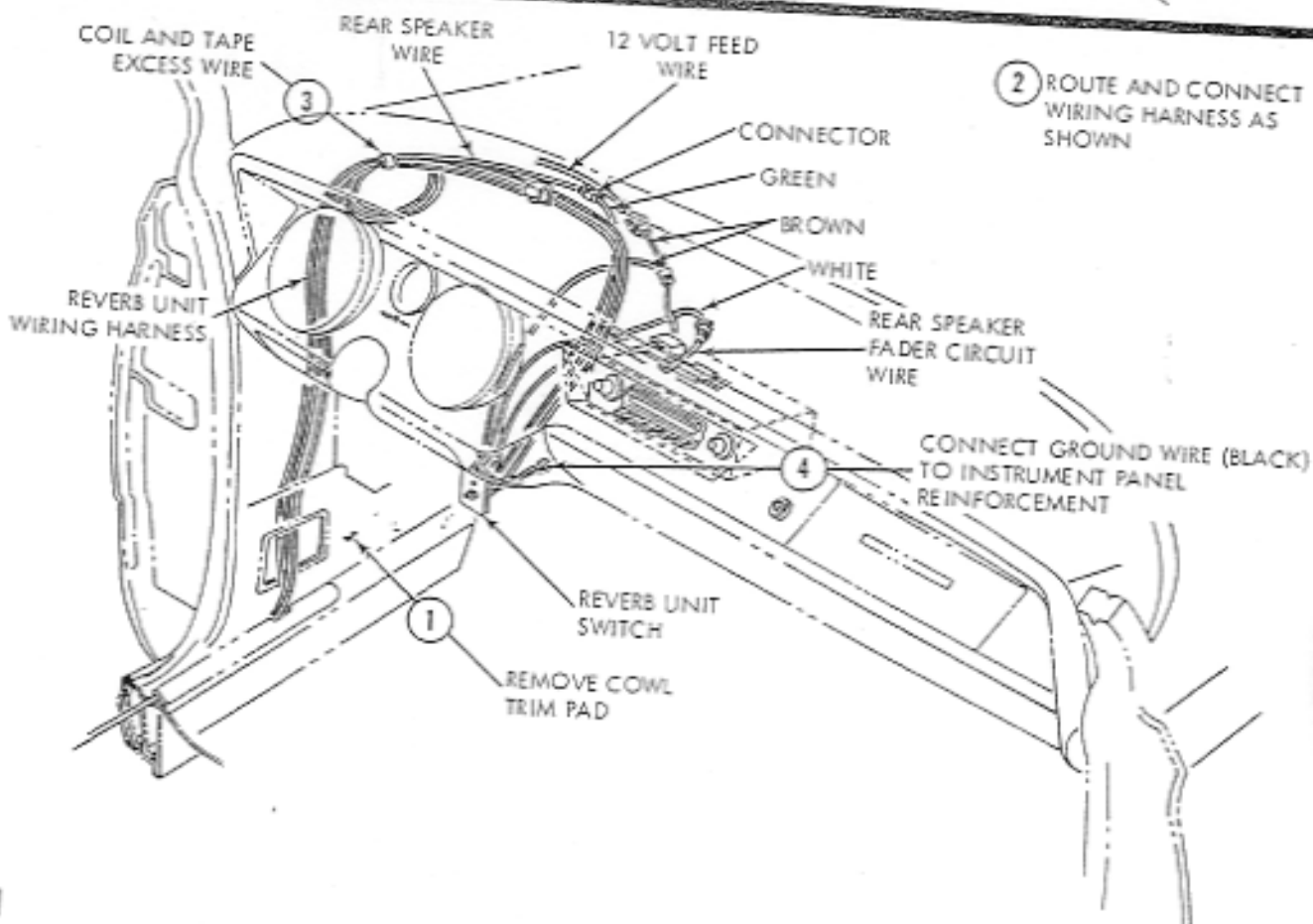
**UPPER SERIES
STATION WAGONS**



- 1 INSTALL REVERB UNIT SWITCH ON RIGHT ACCESS PLATE AS SHOWN IN VIEW A



VIEW A



- 2 ROUTE AND CONNECT WIRING HARNESS AS SHOWN

**UPPER SERIES
CONVERTIBLES**

LOCATE REVERB UNIT
AGAINST FENDER WELL
AS SHOWN

DRILL THREE (3) HOLES
WHERE SHOWN

VIEW A

FENDER WELL

7-1/2"

INSERT WIRING HARNESS
THROUGH HOLE IN FLOOR
AND CONNECT TO REVERB UNIT

- 2 DRILL THREE (3) 9/64" DIA.
HOLES AS SHOWN IN
VIEW A
- 3 SECURE REVERB UNIT
USING THREE (3) SCREWS
- 5 PULL STRING TO REMOVE
ATTACHED SHIPPING CLIP
AND REMOVE TAPE AND
WOODEN DOWEL

- 1 REMOVE REAR SEAT CUSHION

PULL WIRING HARNESS DOWN FROM
BEHIND REAR SEAT BACK REST

REMOVE SCREWS FROM
RIGHT ARM REST PANEL

REMOVE SILL PLATE

ROUTE WIRING HARNESS ACROSS
FLOOR AND UNDER
EDGE OF ARM REST

ROUTE WIRING HARNESS
THROUGH CARPET SUPPORT

2

